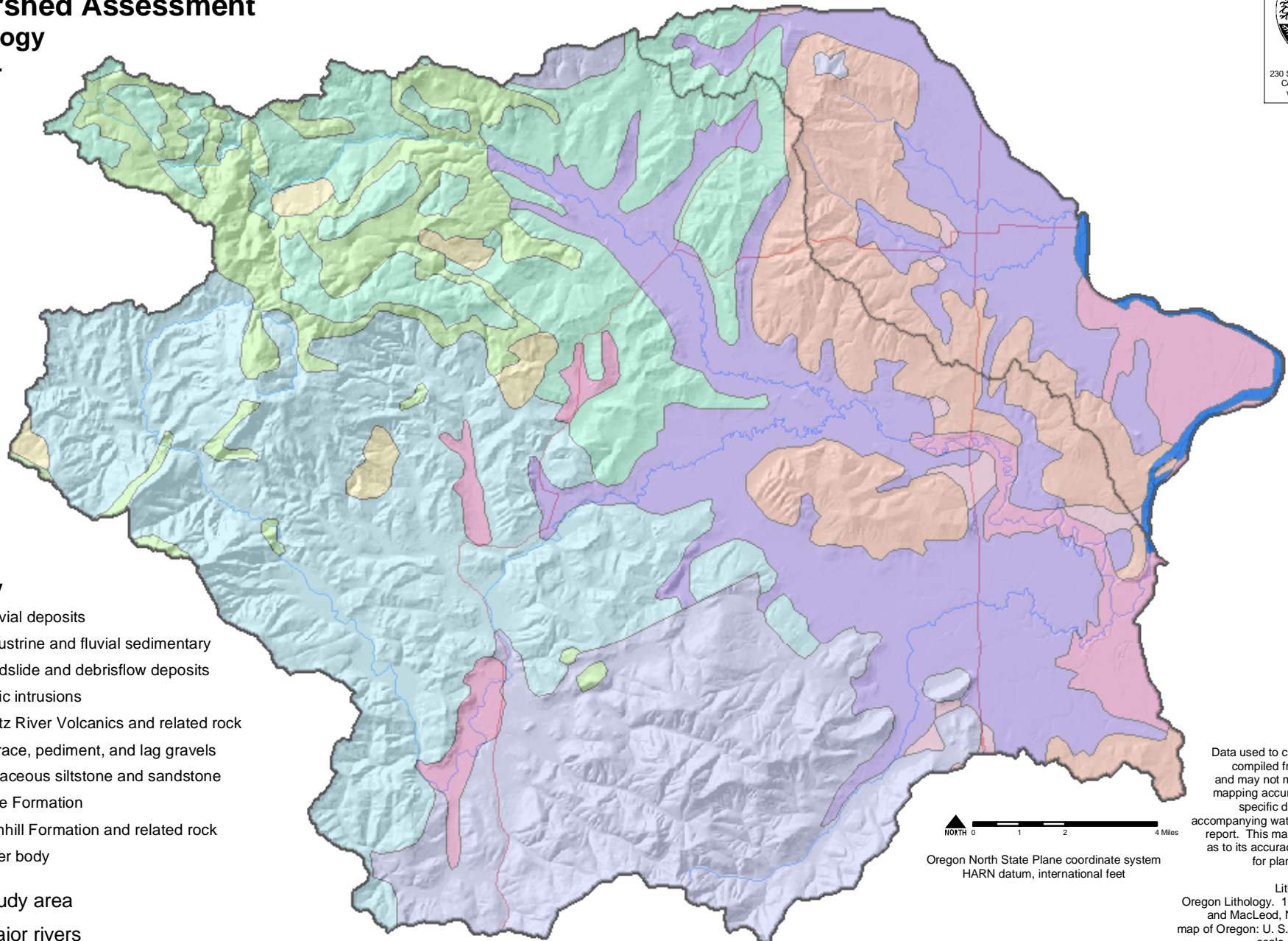











Luckiamute/Ash Creek/American Bottom Watershed Assessment Lithology Map 4



Lithology

-  Alluvial deposits
-  Lacustrine and fluvial sedimentary
-  Landslide and debrisflow deposits
-  Mafic intrusions
-  Siletz River Volcanics and related rock
-  Terrace, pediment, and lag gravels
-  Tuffaceous siltstone and sandstone
-  Tye Formation
-  Yamhill Formation and related rock
-  water body
-  Study area
-  Major rivers
-  Major roads

 0 1 2 4 Miles
 Oregon North State Plane coordinate system
 HARN datum, international feet

Data used to create this map were compiled from multiple sources and may not meet federal or state mapping accuracy standards. For specific data sources see the accompanying watershed assessment report. This map has no warranties as to its accuracy and is to be used for planning purposes only.

Lithology Data Source:
 Oregon Lithology. 1991. Walker, G.W., and MacLeod, N.S., 1991, Geologic map of Oregon: U. S. Geological Survey, scale 1:500,000, 2 sheets, contact: Oregon Geospatial Data Clearinghouse. (<http://www.gis.state.or.us/>)